

**LOCATION:** 819 30<sup>th</sup> Ave S. Moorhead

**SUITE:** 210

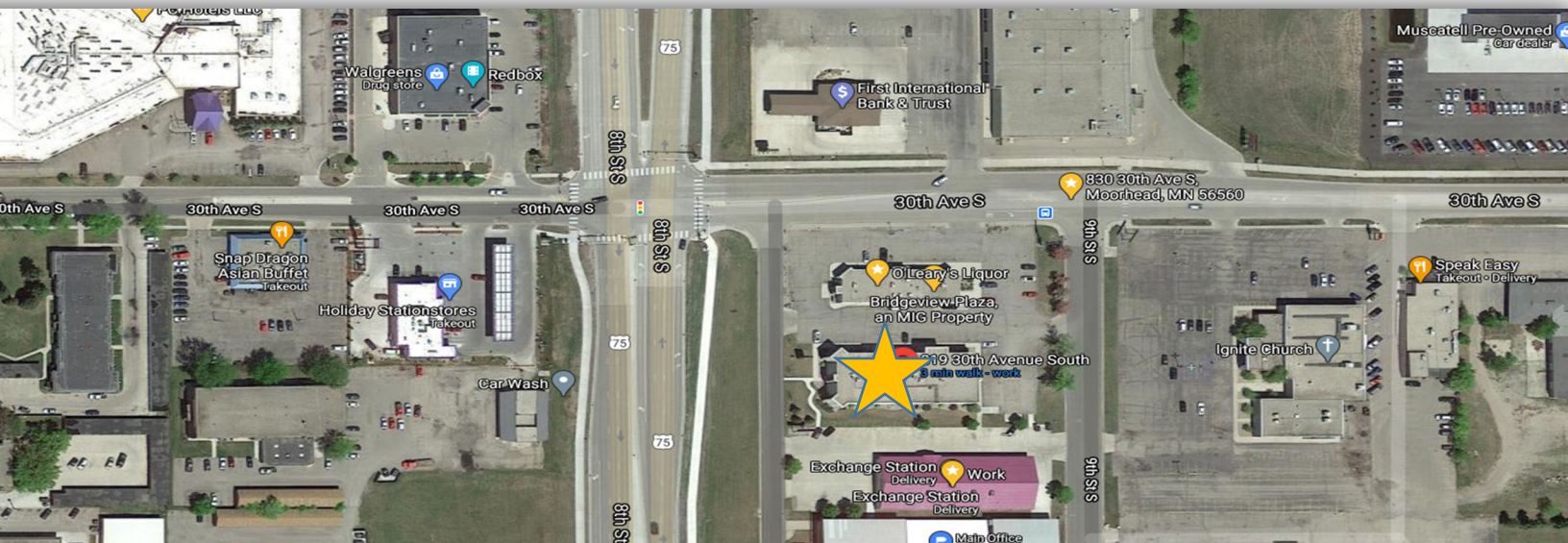
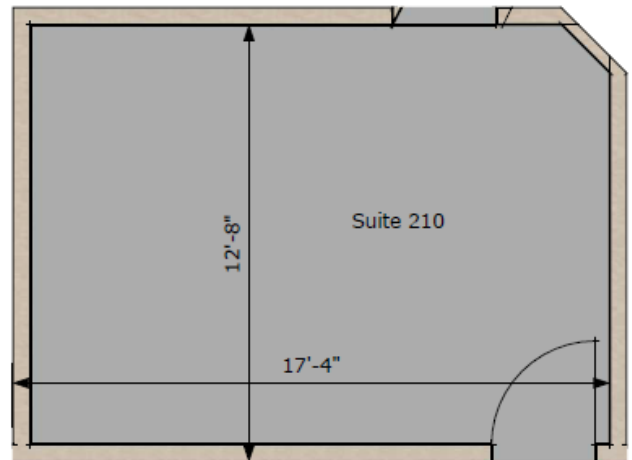
**USE:** Commercial Office Space

**SIZE:** 218 sf

**RATE:** \$24.77/sf - \$450/month

**AMENITIES NEARBY:** Subway, DQ, Asian Buffet, CVS, Holiday Station Store, Doggy Depot.

**DETAILS:** Great Location with Easy Access to I-94. Visibility from 8<sup>th</sup> St. South. Private Entry into Suite. Private Parking Lot and Street Parking available. CAM Included. 1 Phonenumber & Internet Included.



Office: 3100 8<sup>th</sup> Street S Moorhead MN 56560

**Ken Martin** [Ken@MIGProperties.com](mailto:Ken@MIGProperties.com) 701.371.4484

